

**WAREHOUSE / INDUSTRIAL**  
**300 Enterprise St – Bismarck ND**



- \$949,000.00
- Bldg size  
31,924 sf
- Lot size  
108,900 sf or 2.5 ac
- Zoned MA
- Built in 1976
- Taxes \$11,974
- No Specials

**Contact Information:**

**Kyle Holwagner**  
701.400.5373  
Kyle@DanielCompanies.com

**Bill Daniel, CCIM**  
701.220.2455  
Bill@DanielCompanies.com

**Ann Sharp**  
701.220.0261  
Ann@DanielCompanies.com

**Daniel Companies**  
304 E Rosser Ave Suite 200  
Bismarck ND 58501  
701.223.8488  
701.223.8860 fax

Broker does not guarantee the information describing this property. Interested parties are advised to independently verify the information through personal inspectors or with appropriate professionals.

**DanielCompanies.com**



The Leader In Commercial

## Potential Uses

- Distribution
- Warehouse
- Storage
- Manufacturing
- Assembly
- Service

## Area Businesses

- Coca Cola Bottling Co.
- Border States Electric
- Acme Electric Tool Crib
- River City Sports
- Clear Channel Radio
- Bis-Man Transit System
- Greyhound Bus Service
- Cenex

Broker does not guarantee the information describing this property. Interested parties are advised to independently verify the information through personal inspectors or with appropriate professionals.





The Leader In Commercial

## 300 Enterprise St

- **Great visibility and easy access from**
  - Bismarck Expressway
  - Main Avenue
  - I-94
- **18' side walls / 20' side walls**
- **Open warehouse**
- **Pave driveway**
- **Overhead door – walk-in door**
- **Zoned MA**
- **Dock height**
- **Great location**
- **Easy access for delivery trucks or customers**

Broker does not guarantee the information describing this property. Interested parties are advised to independently verify the information through personal inspectors or with appropriate professionals.



## 300 Enterprise St



Broker does not guarantee the information describing this property. Interested parties are advised to independently verify the information through personal inspectors or with appropriate professionals.



## 300 Enterprise St



Broker does not guarantee the information describing this property. Interested parties are advised to independently verify the information through personal inspectors or with appropriate professionals.

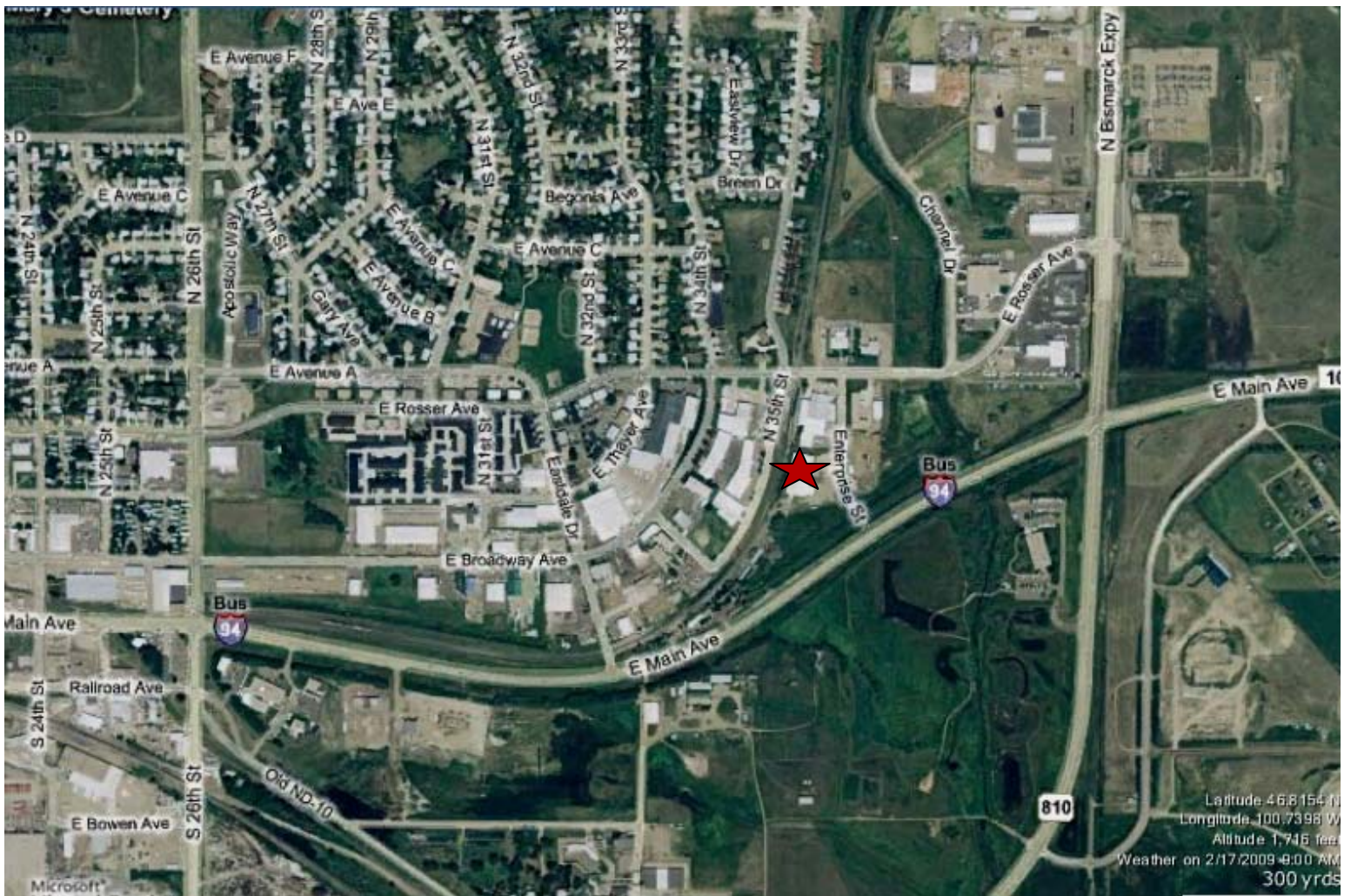




DANIEL COMPANIES

The Leader In Commercial

300 Enterprise St ★



FOR SALE



RETAIL • INVESTMENTS • OFFICE • INDUSTRIAL • SITE SELECTION • LEASING • BUILD TO SUIT • BROKERAGE



The Leader In Commercial





The Leader In Commercial





The Leader In Commercial

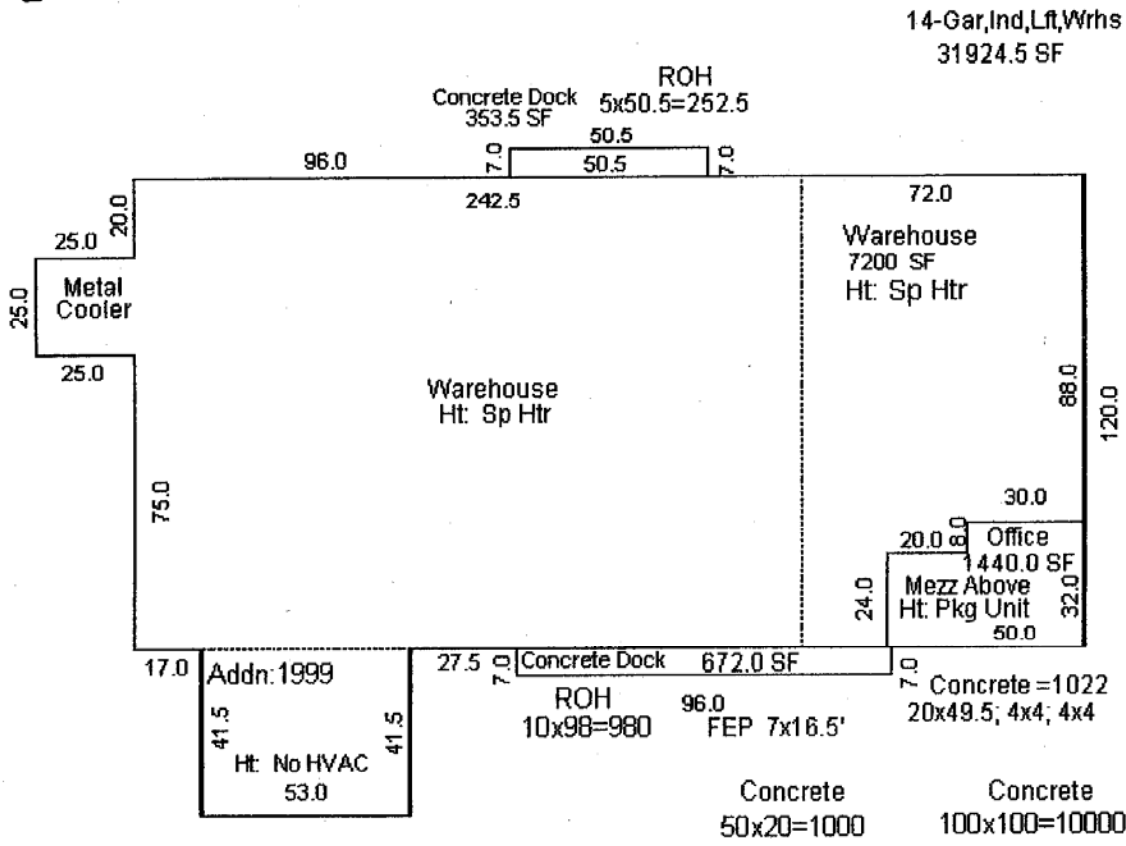


RETAIL • INVESTMENTS • OFFICE • INDUSTRIAL • SITE SELECTION • LEASING • BUILD TO SUIT • BROKERAGE



DANIEL COMPANIES

The Leader In Commercial



FOR SALE

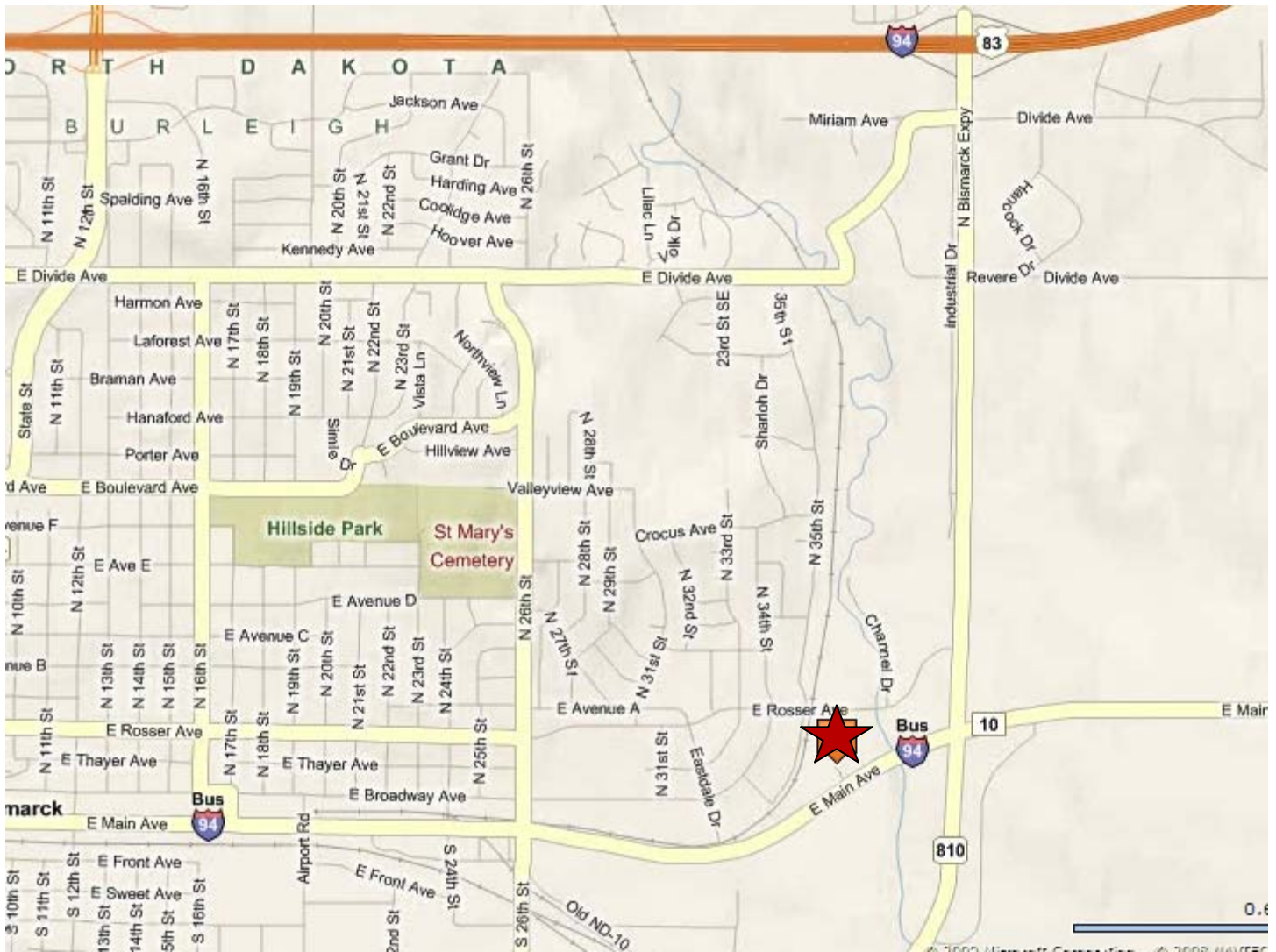




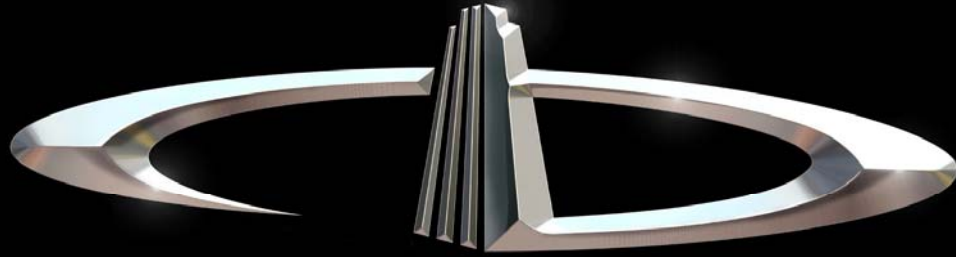
**DANIEL COMPANIES**

The Leader In Commercial

**300 Enterprise St** ★



RETAIL • INVESTMENTS • OFFICE • INDUSTRIAL • SITE SELECTION • LEASING • BUILD TO SUIT • BROKERAGE



# DANIEL COMPANIES

The Leader in Commercial Real Estate

Serving commercial real estate customers with unmatched market knowledge, experience, and well-deserved reputation for integrity.

They know the Bismarck-Mandan commercial real estate market better than anyone. This powerful team delivers powerful results



**Bill Daniel, CCIM**  
220-0261



**Kyle Holwagner**  
400-5373



**Ann Sharp, GRI**  
220-0261

304 E. Rosser Ave., Suite 200 Bismarck, ND 58501

Office: 701-223-8488 [DanielCompanies.com](http://DanielCompanies.com)

RETAIL • INVESTMENTS • OFFICE • INDUSTRIAL • SITE SELECTION • LEASING • BUILD TO SUIT • BROKERAGE